



Pump Accessories

- ▶ *Heavy Duty Roll Cage Frame Assemblies Scratch Resistant Powder Coated Steel*
- ▶ *Mounting Base allows for Simplified Installation on 182/184/215JM Framed Electric Pumps*
- ▶ *Floodfree Electric Pump Control and Alarm with Ten Foot Long Sensor Wire for Reliable Worry-Free Pump Control*

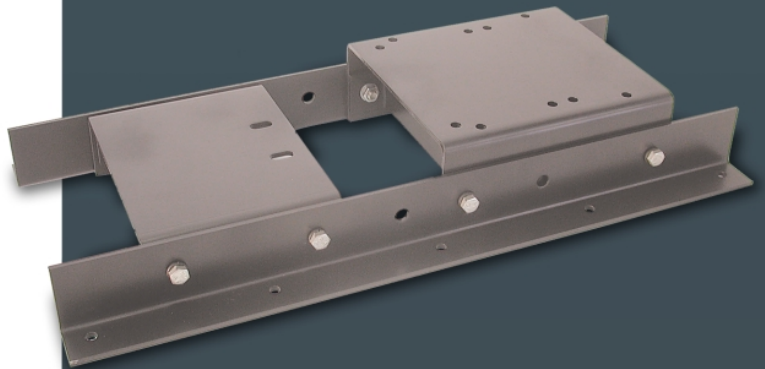
**NEW
ACCESSORIES
FOR
2007**



Electronic Pump Control & Alarm



**Heavy Duty Steel
Roll Cage Assembly**



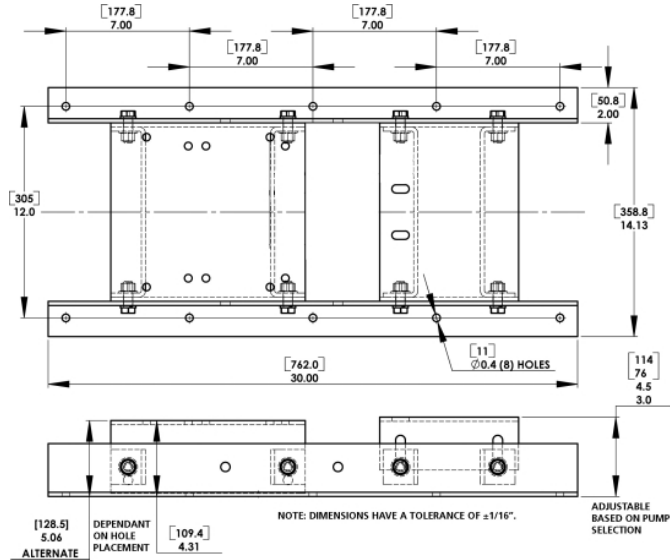
Mounting Base

AMT Pump Accessories

AMT Part No.	Mounting Base	Ship Wt. (Lbs)
A200-90	Designed for 182/184/215JM frames	50



- Mounting Base A200-90 allows for simplified installation of 182/184/215JM Framed Electric Pump Motors
- Sturdy, rigid base to allow for pump stability and support of pump being mounted to base
- Easily adjustable hole placement to allow for multiple pump models and specified above motors



AMT Part No.	Roll Cage Frames	Ship Wt. (Lbs)
2760-104-KO	3 HP/4HP Frame	14
3120-105-KO	5 HP Frame Includes 25mm Raising Blocks	25
1696-100-KO	8 HP Frame Includes 30mm & 50 mm Raising Blocks	31
1696-BAT-KO	12V DC Battery Tray Kit & Cable for 8 HP Frame	3

AMT Part No.	Floodfree	Ship Wt. (Lbs)
C380-90	Electronic Pump Control & Alarm	2

The Floodfree control provide diagnostic LED's for power, water detection, and a pump running indicator. Built-in 80db high water alarm warns before any potential problems occur. Sensor wire can be extended to any length which allows user to set high/low levels. Suitable for float replacement also.

Specifications:

- 120/110 Volt
- 15/20 Amp
- For Pumps Rated Up to One HP
- Three Prong Plug

Includes:

- Floodfree Control Module
- Ten Foot Long Sensor Wire



See price book page 15

The Gorman-Rupp Company reserves the right to discontinue any model or change specifications at any time without incurring any obligation.

42 Springer Pumps, LLC
Telford, PA 18969

Tel: 866-777-6060 / Int'l: 215-949-2900
Fax: 866-777-6383 / Int'l: 215-721-1296

CP41-42/1206
www.springerpumps.com
info@springerpumps.com